

EAST BAY SPCA

# TRANSFORMING LIVES

## **TOGETHER**

ANNUAL REPORT 2016



## Adoption is for life...

Reflecting on 2016, we are proud of so many accomplishments! We beat all service records and continue to be a much-needed resource for the community. We had more adoptions, including more animals with severe medical and behavioral needs, more programs in classrooms and with youth groups, more volunteers in our facilities and more foster volunteers who shared their homes with shelter pets.

We have a fabulous staff and cadre of volunteers who continue to provide help to the growing numbers of needy animals in our community. We're not afraid to take the toughest cases, animals that would otherwise fall through the cracks, and work with them to provide the care and medical attention they need before a new family brings them home.

Whether it is a cat who stays for more than a year or dog who returns to us over and over through no fault of his own, we are here for the animals in our community in their time of need. Period. Thanks to our generous donors and dedicated staff and volunteers, we have served our community since 1874, and will continue to do so for the decades and centuries to come.

We would like to give a heartfelt thank you to all of you who support our local animals. You make this life-saving work possible.



**ALLISON C. LINDQUIST**  
President and CEO

**East Bay SPCA President  
and CEO Allison Lindquist with Irma.**



## BOARD OF DIRECTORS

Stacey Wells  
*Board Chair*

Carolyn Belloni

Mark Cratsenburg

Lynne Dujmovich

Denise Garner

Jay Hernandez

Sandi Wright

## MANAGEMENT

Allison Lindquist  
*President and CEO*

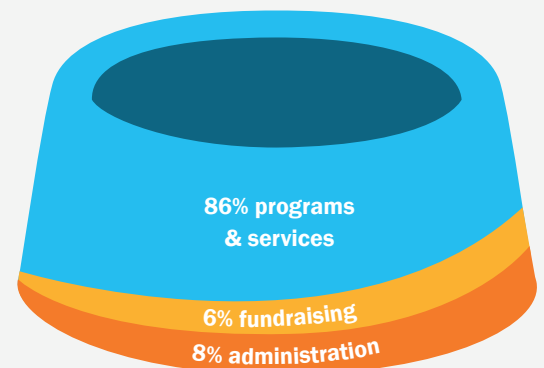
Tracie Cota  
*Vice President  
of Veterinary Services*

Barbara Dryg  
*Vice President of Finance*

Grace Reddy  
*Vice President of Development*

Michele Setter  
*Vice President of Operations*

## WHERE YOUR GIFT GOES

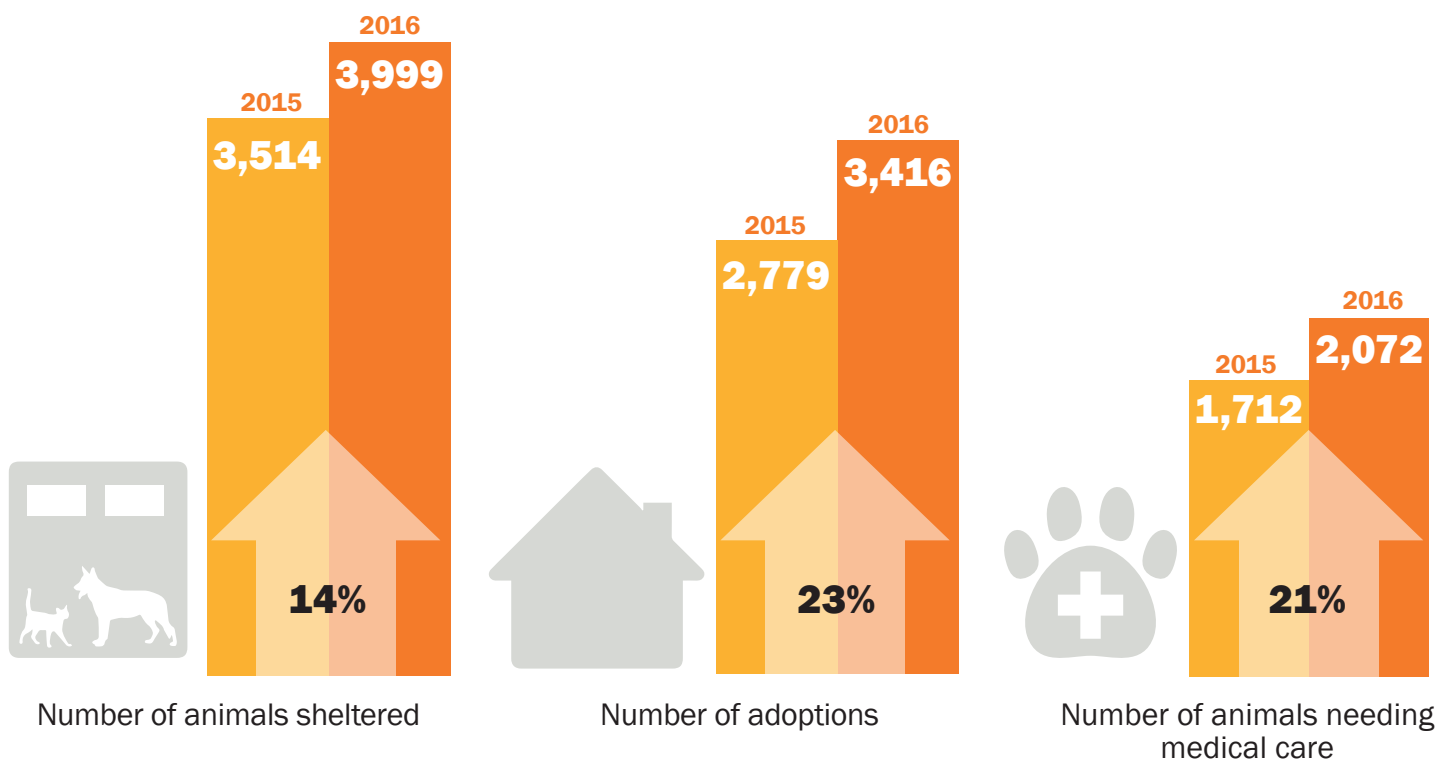


In 2016, \$.86 of every dollar donated went to programs and services.

# FINANCIALS FOR YEAR END DECEMBER 31, 2016

FINANCIAL POSITION			REVENUE & SUPPORT		
	2015	2016		2015	2016
Current Assets	\$1,221,668	\$1,431,790	Fundraising	\$4,130,518	\$4,947,137
Property & equipment	\$14,395,860	\$13,920,496	Program services	\$3,611,554	\$3,687,254
Endowment (Split interest agreement assets)	\$1,984,404	\$1,404,043	Investments	\$561,413	\$1,313,984
Investments	\$17,297,131	\$17,136,214	Other support	\$73,341	\$79,741
Contributions receivable	\$574,929	\$777,647	<b>Total</b>	<b>\$8,376,826</b>	<b>\$10,028,116</b>
<b>Total assets</b>	<b>\$35,473,992</b>	<b>\$34,670,190</b>	EXPENSES		
Current liabilities	\$9,359,949	\$9,218,203	Adoptions & community programs	\$4,024,894	\$4,336,268
Net assets	\$25,114,043	\$24,701,987	Animal care & medical services	\$4,359,867	\$4,513,259
Long-term debt	\$1,000,000	\$750,000	Fundraising	\$703,758	\$665,484
<b>Total liabilities</b>	<b>\$35,473,992</b>	<b>\$34,670,190</b>	Support services	\$770,378	\$808,765
			<b>Total</b>	<b>\$9,858,897</b>	<b>\$10,323,776</b>

## THE NUMBERS BEHIND THE LIVES JANUARY 1, 2016 – DECEMBER 31, 2016



See our complete 2016 shelter statistics at [eastbayspca.org/animalstats](http://eastbayspca.org/animalstats)

## BEHAVIOR & TRAINING

# Captain Provides Calm and Comfort

---

Andrea Cheeseman says that when her high-energy 10-year-old son, Jason, let her know he was ready for a pet other than fish or turtles, she knew it was time to start searching for a dog.

“My son really needed something to love... We passed up lots of dogs for minor reasons, but Captain showed up on our radar,” the San Ramon resident said. “Captain has taught him when to be a little calmer and gives him comfort when he needs it.”

Captain, a five-year-old Labrador retriever and pit bull mix, wasn't always so calm himself. When he was brought in as a stray from San Leandro, East Bay SPCA intake evaluators labeled him as a bit hyperactive. Staff quickly enrolled him in the East Bay SPCA's behavior modification program as an “Enriched Einstein” to get daily mental stimulation games, exercises and plenty of outside playtimes. They also signed him up for the “Polite Pooch” program to help him work on better minding his manners.

“Captain was looking for direction and needed the consistency and routine a dog usually gets in the home.” said Ali Talley, the East Bay SPCA's Director of Behavior & Training. “Because he was so attentive and eager to please, as soon as we started his behavior plan, he made remarkable progress!”

Soon after Captain's adoption, Andrea's husband Matt had a death in the family. Captain played a big role in the Cheesemans' grief recovery. When Andrea's husband needed to take time off work and her kids were overwhelmed, she said Captain was a saving grace.

“My husband would take long walks with Captain to decompress,” she said. “Captain's needs for walks kept him moving and helped him slowly move forward.”

Captain is just one of more than 300 shelter pets whose behavior modification plans helped assure placements in forever homes in 2016. The East Bay SPCA Behavior and Training Department worked with 50 percent more shelter animals in 2016, transforming many more lives like the Cheesemans.



Jason with Captain.

*“Captain has taught him when to be a little calmer and gives him comfort when he needs it.”*

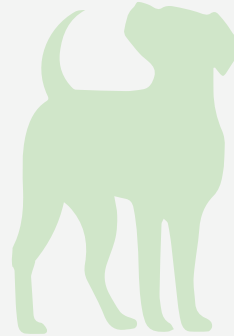
## ANIMALS IN BEHAVIOR PROGRAMS 2015 VS 2016



**2015 2016**  
Courageous  
Canine



**2015 2016**  
Polite Pooch



**2015 2016**  
Enriched  
Einstein



**2015 2016**  
Cats

**Courageous Canines** can be timid and shy when meeting new people, but with familiar folks, it's all cuddles and kisses! To encourage brave choices, these dogs need time to assess a situation and rewards for when they show bravery.

**Polite Pooches'** youth, energy and/or intelligence requires lots of mental stimulation and exercise. When they make polite choices, such as "all-four-on-the-floor," and waiting before going through doors, they get treats and high praise.

**Enriched Einsteins** make excellent choices, but need enrichment to stay engaged. Whether they are seniors, working dogs or those with long shelter stays, they get daily mental stimulation games, enrichment exercises, and lots of outside time!

**Felines** who are timid, fierce or bored by the shelter environment also need personalized care. Enrichment plans can build confidence, responsiveness through clicker training or could engage using play therapy, interactive toys or loving, calm attention.

**The Cheesemans with Captain.**



## VOLUNTEER SERVICES

# Volunteering Leads to Career Journey

When Anais Montenegro and her dad adopted Second Chance puppy Dexter in 2012 from the East Bay SPCA in Dublin, she had no idea he would lead her to her career path, but one year later, she began volunteering at the shelter.

“Volunteering has helped shape my career choice,” the 24-year-old said. “I currently work in a pet hospital, and will be pursuing a career in zoology.”

Anais volunteers for the East Bay SPCA's Canine Companion & Enrichment program for shelter dogs and in the Foster program, where she has accrued more than 350 hours. At the shelter, she provides exercise, mental stimulation, and training to shelter dogs, including teaching basic skills to make the dogs more adoptable as well as develop good housebreaking habits. As a foster, she also has taken shelter dogs out on field trips and sleepovers.

Before she adopted Dexter, a Mini Pinscher who came in as a stray with behavioral issues and significant hair loss, Anais wanted to be a radiology technician. But once she began volunteering, her career interests moved down the pet pathway.

“After becoming involved in the Canine Companion & Enrichment program and spending more time with the animals, I started to wonder if I was making the right career choice,” she said. “Coming to the shelter and seeing the animals made me so happy.”

Anais had an “a-ha moment” when the East Bay SPCA partnered with other local animal welfare organizations to rescue dogs from a South Korean dog meat farm in 2015.

“I was horrified that animals could be used in a cruel way, and decided that I should dedicate my career to helping animals,” she said. “I hope I can continue to help animals for the rest of my life and look forward to doing so.”

Anais is just one of more than 700 volunteers, including foster volunteers, who helped the East Bay SPCA in 2016 and gave more than 32,000 combined hours of service. She now works as a veterinary assistant at Eden Pet Hospital, transforming the lives of many pets and their owners each day.



Anais with Dexter, her adopted dog.

**57,287 = \$1,382,908\***  
Volunteer and foster hours served in 2016 in cost savings

\*Calculated according to independentsector.org's estimate of the value of volunteer time in California to include required payroll taxes and other hourly costs for employers.

## HUMANE EDUCATION

# Cats Help Annabel Build Confidence

The East Bay SPCA's Animal Camp is very special to 10-year-old Annabel Harper. When she started at Animal Camp in Dublin a few years ago, she seemed shy. By the time she finished, she was confident enough to hold the Humane Education Program's pet snake Cesar, and at the end of the program, her family took home two living souvenirs.

"She has really grown in her responsibility of taking care of animals," said Annabel's mother Tabitha Harper. "Spending time with the campers and staff has been helpful in bringing her out of her shell."

Annabel said the East Bay SPCA's Humane Education programs have played an important role in her development.

"The East Bay SPCA has made a huge difference in my life, including expressing my love for animals," she said. "A few years later after learning the different medical procedures and watching them being done, I decided I wanted to become a vet."

At the end of Annabel's first Animal Camp in 2015, her family spent extra time with Lou, a black and white cat, but wound up adopting Yogi, who was initially more snuggly.

"I kept looking online at Adoptions to check on Lou and felt so terrible having taken his friend away," Tabitha said. "So, one week later, we went and brought Lou home, too! They have been pals ever since."

Annabel was just one of 458 animal camp students who attended the program in 2016, a 19 percent increase over year prior. Overall, Humane Education programs touched the lives of more than 9,000 participants last year.



Annabel with Lou,  
one of her adopted cats.

*"The East Bay SPCA has made a huge difference in my life, including expressing my love for animals."*

## HUMANE ADVOCACY

# Dogs Provide Balance

---

Life-long Oakland resident Alfred Janske and his brother George were struck by lightning along with their three dogs when camping on Mt. Diablo in 2012. It caused permanent nerve damage to Alfred's left leg, leaving both brothers with temporary numbness in parts of their body, burnt holes in their tent and had unclear effects on their dogs.

Alfred lives with and cares for his brother George, who has Autism. In 2012, the recession put both of them on the verge of homelessness. Their home had been foreclosed upon and a local newspaper reporter wrote a story about them. East Bay SPCA President and CEO Allison Lindquist saw the story in the newspaper and emailed to offer support for their three dogs through the East Bay SPCA's Humane Advocacy Medical Fund, which provides financial assistance for unexpected veterinary bills to qualifying clients.

Once he learned about this and other available services for qualifying low-income East Bay residents, Alfred began bringing his dogs to the East Bay SPCA's monthly Pet Food Pantries and low-cost vaccine clinics.

"You can't stop buying dog food and I can't give them human food... Because the dog food is expensive, the Pet Food Pantry is essential," Alfred said.

The program has allowed him to feed his three dogs over the years and ensure that he still has enough set aside to take care of himself and his brother.

"We look forward to Pet Food Pantry," he said. "Come rain or shine, we're there!"

Alfred, once an accountant and now a gardener, has faced many challenges with the housing crisis in the Bay Area, but has been resilient, thanks to the strong bond and love for his dogs.

## HUMANE ADVOCACY BY THE NUMBERS



**1,675**

Free vaccines given  
at our Wellness Clinics



**526**

Discounted spay and neuter surgeries  
provided through our voucher program



**8,406**

Pounds of pet food provided  
through our Pet Food Pantry



*“Every day is a dilemma for what to spend money on,” he said. “But by connecting with your dogs, they balance you.”*

Alfred’s dog Nellie was one of 400 pets served by Pet Food Pantry in 2016, a 40 percent increase over 2015. The East Bay SPCA has distributed more than 8,406 pounds of pet food, a 62 percent increase from 2015. Through these many Humane Advocacy programs, the East Bay SPCA has been able to continue keeping people and their pets together.



*“We look forward to Pet Food Pantry. Come rain or shine, we’re there!”*

Alfred with Nellie, both lightning survivors.

#### HUMANE ADVOCACY BY THE NUMBERS



**400**

Pets served by our  
Pet Food Pantry in 2016



**154**

People received financial assistance  
for unexpected veterinary bills

## SHELTER

# Lady Saves the Day

---

Varina Michaelis knew she had to be very selective when she began searching online for a dog for her family. She has two teenage sons and her 15-year-old daughter Megan has limited speech and extreme special needs.

“We needed a calm dog who understood the balance of our family,” Varina said, adding that she was excited when they met five-year-old pit bull mix named “Lady” at the East Bay SPCA’s Oakland shelter. “I was worried since she had so many scars on her... She was healing from an infection and she was nervous. She was a Mama dog and obviously had puppies recently.”

Lady went home with the Michaelis family as a trial adoption and soon settled into her new life away from the East Bay SPCA.

The dog became a comfort to each of her sons, she said, along with her daughter.

“I don’t trust easily when it comes to Megan,” Varina recalled. “But I know that she is 100 percent safe with Lady around.”

Protecting Megan from any potential danger helped seal Lady’s place in her forever home.

One time, Megan found the front door open and started to step out of the house.

“Lady immediately got up and placed herself between the door and Megan, so she couldn’t leave,” Varina stated.

Lady has touched the lives of the Michaelis family and is one of more than 800 dogs adopted in 2016 from both East Bay SPCA shelters, up more than 36 percent from year prior.

**Megan and her mom,  
Varina, with Lady.**



## DONOR HIGHLIGHT

# Making a Difference Locally

East Bay SPCA donor Sharyn Delano has rescued animals her whole life and has given to animal causes for decades, but now focuses on giving solely to the East Bay SPCA after she saw how her donations were spent on local life-saving programs rather than elsewhere in the country.

She said she used to have a collection of miscellaneous tote bags, mugs, calendars, and other items from national animal welfare organizations that would send her a calendar and then immediately follow up with a request a month later for a \$50 donation.

“Well, why would I send my dollars elsewhere?” she said. “It is much more realistic to give locally.”

Beginning with her first gift to the East Bay SPCA in 2003, she said all she has received was a few mailing labels. But as she learned more about the local impact of her donations, she began to anticipate and budget for regular requests to the Shelter Fund, Spay/Neuter Fund, Annual Fund, Senior Pets and the Second Chance Fund.

“I started getting invitations to the Growl, Meow and Wine event and other events, and as I began to learn about the mission and all the great programs, I wanted to give more,” Sharyn said. “I really care about animals and even though I was working part time at times I didn’t want to cut back because it was important.”

She is now a major donor to the East Bay SPCA and enjoys events, newsletters and relationships with the East Bay SPCA staff.

“Every time I got a bonus, I would give more,” she said. “Every time I got a raise, I would give it to the East Bay SPCA.”

Sharyn is one of thousands of donors who have decided to invest locally to help protect East Bay pets. Thanks to donors like her, our communities are better places for us all.



Sharyn with kitten Bozeman.



Become a monthly donor.

### WAYS TO GIVE



Plan an estate gift.



Contribute through your workplace. Many employers will match gifts.



**THE EAST BAY SPCA** is committed to the welfare of cats and dogs in the communities we serve. We strive to eliminate animal cruelty, neglect and overpopulation by providing programs and education that support people and companion animals.

---

ON THE COVER: Garon Michaelis with the family dog Lady.

The East Bay SPCA is deeply grateful to **Heidi Eder** of **Right Brain for Hire**, [rightbrainforhire.me](http://rightbrainforhire.me) for all photos in the 2016 *Annual Report*.

## LOCATIONS

---

**Oakland Adoption Center**  
8323 Baldwin Street  
Oakland, CA 94621

**Theodore B. Travers  
Family Veterinary Clinic**  
8323 Baldwin Street  
Oakland, CA 94621

**Oakland Spay & Neuter  
Surgery Center**  
410 Hegenberger Road  
Oakland, CA 94621

**Dublin Adoption Center**  
4651 Gleason Drive  
Dublin, CA 94568

**Dublin Spay & Neuter  
Surgery Center**  
4651 Gleason Drive  
Dublin, CA 94568